

A080-Mini

Gigabit Wireless Link

KEY BENEFITS

Data Rates up to 1000 Mbps

1000 Mbps full-duplex

Protocol Agnostic

Ethernet GigE (1000Base-T)

FCC Licensed Spectrum

Uses 71-76 GHz and 81-86 GHz licensed spectrum

Highly Reliable

Achieves 99.999% weather availability for most common deployments

Small Form Factor

Smaller than competitive products in its class.

Ease of Deployment

Can be deployed within hours

Power over Ethernet (PoE+)

Compatible with IEEE802.3at PoE+ standard with less than 25.5 Watts

Extremely Low Latency

Radio latency < 50 us

Product Overview

The Athena Wireless A080-Mini is a point-to-point wireless communication system capable of transporting up to 1000 Mbps of full duplex traffic over a distance of a few kilometers. It operates in the 71-76 GHz and 81-86 GHz, licensed bands, allowing for interference free communication when deployed properly. The A080-Mini was introduced by Athena Wireless Inc. to address the needs of high capacity wireless deployments ranging from about 10 meters to 3.5 km, while providing carrier class weather availability.

The A080-Mini has the ability to transmit data at rates of 1000 Mbps (1000 Mbps full-duplex). The A080-Mini includes an in-band management interface allowing it to be managed remotely over the Ethernet LAN.

Its unique design deviates from industry tradition with the combination small-form-factor and square structure. This allows the A080-Mini to achieve a smaller form factor with an esthetically pleasing non-obtrusive antenna.

Applications

Cellular Backhaul (RAN)

LAN Extension

Storage Area Network (SAN)

Distributed Antenna Systems (DAS)

Metro/Carrier Ethernet Services

Temporary Network Deployments

Disaster Recovery

Network Redundancy/Failure Recovery

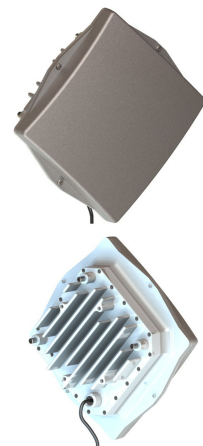
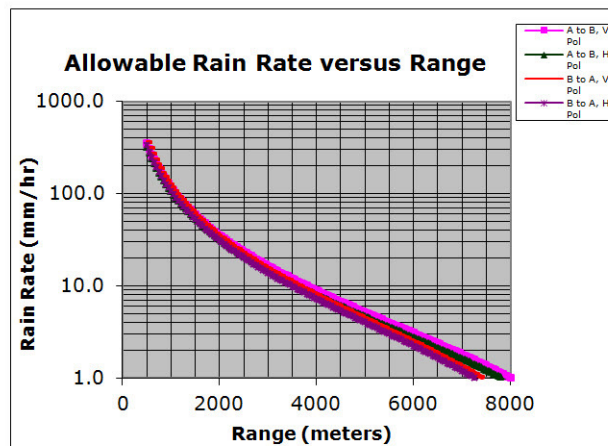


A080-Mini

Gigabit Wireless Link

Product Specifications

- | | |
|----------------------------|--|
| System | <ul style="list-style-type: none">Transmission Capacity: 1000Mbps full duplexSystem Latency: < 50 usecFEC: Reed SolomonModulation: QPSKEthernet Frame Size: 9000 bytesBit Error Rate: <math>10^{-6}</math> |
| Interfaces | <ul style="list-style-type: none">Data Interface: 1000Base-T RJ-45PoE+ (IEEE 802.3at)20W power consumption |
| Management | <ul style="list-style-type: none">HTTP (Web browser-based)SNMP: version 1, 2c, 3MIB Supports: Proprietary MIB |
| Radio & Antenna | <ul style="list-style-type: none">RF Spectrum: 70/80 GHzAntenna Gain: 43 dBiAntenna Size: 210 mm x 210 mmBeam width: 1° (3dB point) |
| Environmental | <ul style="list-style-type: none">Operating Temperature: -22°F to 131°F (-30°C to 55°C)Altitude: 0 to 10,000 ft (3000 meters)Wind Load: Operating 160Km/h, Survival 200 Km/h |
| Size | <ul style="list-style-type: none">Radio: 222 mm x 222 mm x 89 mm (8.7" X 8.7" X 3.5") |
| Weight | <ul style="list-style-type: none">Radio: 2.7 Kg (5.9 Lbs) |
| Product Rev | <ul style="list-style-type: none">Rev A |
| Firmware Rev | <ul style="list-style-type: none">AthenaApp 2.00 |
| Regulatory | <ul style="list-style-type: none">CE, EN 302 217-3, EN 301 489-4, EN 302-217-4-2FCC, Unlicensed band FCC ID:Z19-A080 & IC: 9662A-A080 |



Sales & Marketing

Athena Wireless Corporation Inc.
12425 W. Bell Rd. Suite 144
Surprise, AZ 85378
www.athenawave.com
623-242-7224